

What's New in TRACCESS CI (8.1)?

At TTG Systems, we are constantly changing and updating our software to meet the needs of our clients. The main features of TRACCESS CI (8.1), as described below, were incorporated to do just that.

Occupational Development Schedule

Learners in any organization are often assisted with their career progression by getting together with their Supervisors and mapping out their learning for the year. Using the Occupational Development Schedule (also known as Schedule), a Learner can plan their activities for the upcoming year.

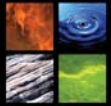
Occupational Development Schedule

TRACCable Resources

There are now 5 different types of resources that can be added to a Task: Course, Document, Help, URL and TRACCable. A TRACCable Resource functions the same way as a regular resource in that it can be reused within the database, but it also has the ability to “track” what the Employee has viewed/ completed within the Task. There are two ways of indicating resource “completion”:

- If your installation includes the ASSESS CI software, you can attach an assessment that has been created within ASSESS CI (powered by Perception QuestionMark) to your resource. Successful completion of the assessment will mark the resource as complete.
- If your installation does not include ASSESS CI, you can simply view the resource, and click a **Mark as Complete** button

The main purpose of TRACCable Resources is to enable the Learner to “mark their place” – by indicating which resources they have reviewed, and which ones they have left to look at.



Capability Assessments using ASSESS CI

In the initial release of TRACCESS CI, we introduced Capability Assessments using an Internal checklist that was created within TRACCESS. Although this functionality is still available, you now have the choice to add a TRACCESS Capability Assessment checklist, or to add a Capability Assessment that has been created within ASSESS CI (powered by Perception QuestionMark).

Updated Report Layouts

Although the report layouts have always presented all of the required information, they were not in a consistent format with an “up-to-date” look and feel. TRACCESS CI (8.1) presents reports in a whole new, and better-looking, light.

Report - TRACCESS CI

Qualification Information Calculated on 2007-08-25T22:55:05 GMT -08:00
Generated By Campbell

Use TRACCESS CI

Totals for this Report Across All Selected Learners and Competence Levels						
	Knowledge		Capability		Total Assignments	
Complete	9	89.2%	0	0%	7	53.8%
About to Elapse	0	0%	0	0%	0	0%
Incomplete	3	23.1%	5	38.5%	6	48.2%
Elapsed	0	0%	0	0%	0	0%
Revised	0	0%	0	0%	0	0%
Total Assignments	12	92.3%	5	38.5%	13	
Total Unique Employees					1	
Total Unique Tasks					13	

TRACCESS - Qualification Report

	Knowledge		Capability		Competence Level		
	Date	Status	Date	Status	Date	Elapse	Status
Training							
Campbell, Eugene							
Use CIUse TRACCESS CI							
Use CIUse TRACCESS CI	Interpret TRACCESS Today	---	I	---	I	---	Incomplete
Use CIUse TRACCESS CI	Change Password	2007-08-25	C	---	I	2007-08-25	Incomplete
Use CIUse TRACCESS CI	Send Messages & Provide Feedback	2007-08-25	C	---	N/A	2007-08-25	Complete
	Provide Feedback	---	I	---	I	---	Incomplete
Use CIUse TRACCESS CI	Interpret Bookmarks	---	N/A	---	I	---	Incomplete
	Interpret Saved Assessments	2007-08-25	C	---	I	2007-08-25	Incomplete
Use CIUse TRACCESS CI	Use Search	2007-08-25	C	---	N/A	2007-08-25	Complete

	Knowledge		Capability		Total Assignments	
Complete	4	57.1%	0	0%	2	28.6%
About to Elapse	0	0%	0	0%	0	0%
Incomplete	2	28.6%	5	71.4%	5	71.4%
Elapsed	0	0%	0	0%	0	0%
Revised	0	0%	0	0%	0	0%

TRACCESS CI (8.0) – Original Report Layout



Report - TRACCESS CI

1 / 3 Main Report 75% Business Objects

TTG Systems Use TRACCESS CI **TRACCESS CI**

Summary							
Knowledge		Cases/ID		Combined Status			
	% of Total Assignments		% of Total Assignments			% of Total Assignments	
Complete	3	23.1%	1	7.7%	Complete	2	18.4%
About to Elapse	0	0.0%	0	0.0%	Incomplete	11	84.6%
Incomplete	9	68.2%	9	68.2%	Completed Status	0	0.0%
Elapsed	0	0.0%	0	0.0%	Total Assignments	13	
Revised	0	0.0%	0	0.0%	Total Unique Employees	1	
Total Assignments	12	82.4%	10	78.8%	Total Unique Tasks	13	

Organized by Organization

	Knowledge		Cases/ID		Task Status		
	Date	Status	Date	Status	Date	Elapse	Status
Universal Enterprises							
Campbell, Eugene							
Use CID1: Use TRACCESS CI							
Use CID1: Use TRACCESS CI Change Password							
Change Password			6/28/2007	C			Incomplete
Use CID1: Use TRACCESS CI Work with Bookmarks							
Add Bookmarks/ Access Bookmarks							Incomplete
Save an Assessment							Incomplete
Use CID1: Use TRACCESS CI Send Messages/ Provide Feedback							
Send Messages							Incomplete
Provide Feedback			6/28/2007	C			Complete
Use CID1: Use TRACCESS CI Use Search							
Use Search			6/28/2007	C	6/28/2007	C	Complete
Use CID1: Use TRACCESS CI Assess/ Use TRACCESS Today							
Assess/ Use TRACCESS Today							Incomplete

Process Summary - Use CID1: Use TRACCESS CI							
Knowledge		Cases/ID		Combined Status			
	% of Total Assignments		% of Total Assignments			% of Total Assignments	
Complete	3	42.9%	1	14.3%	Complete	2	28.6%
About to Elapse	0	0.0%	0	0.0%	Incomplete	8	71.4%
Incomplete	3	42.9%	4	57.1%	Completed Status	0	0.0%
Elapsed	0	0.0%	0	0.0%	Total Assignments	7	
Revised	0	0.0%	0	0.0%	Total Unique Employees	1	
Total Assignments	8	58.7%	6	71.4%	Total Unique Tasks	7	

Close Help

TRACCESS CI (8.1) Report Layout

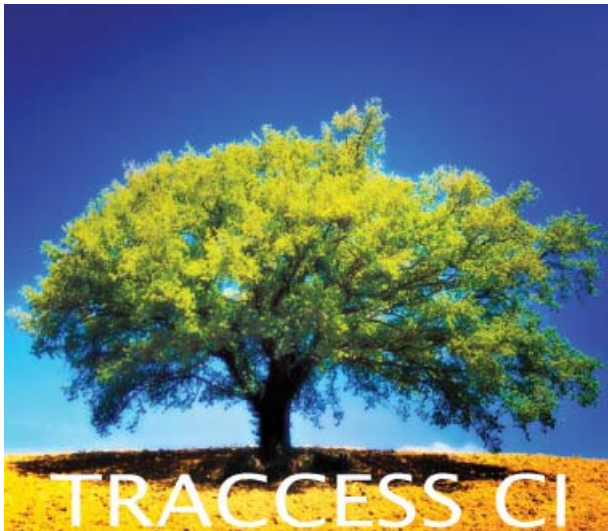
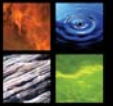
Export/ Import Translations

In the past, translating a software application was a tedious process – first, a developer would export a list of text strings (which would include Object/ Property names, error messages, menu options, etc), then they would have to go through a list of dialogs, create a copy in the new language, and translate all of the text that would appear on these dialogs. Certain words were often “hard-coded” into the program, would not appear in either of these places, and would be extremely difficult to change.

TRACCESS CI (8.1) provides a way for the System Owner to generate an Excel spreadsheet of all of the text in the application, which can subsequently be given to a translator.

Customizing TRACCESS CI for your Organization

You may wish to customize certain graphics for your organization. The Modify Image Lists functionality allows almost every graphic in the application to be customized. In particular, you may wish to customize the Background Login Image. By default, TRACCESS CI comes with our tree graphic, but this can be changed to better suit your organization.



TRACCESS CI Default Login Image



TTG Systems



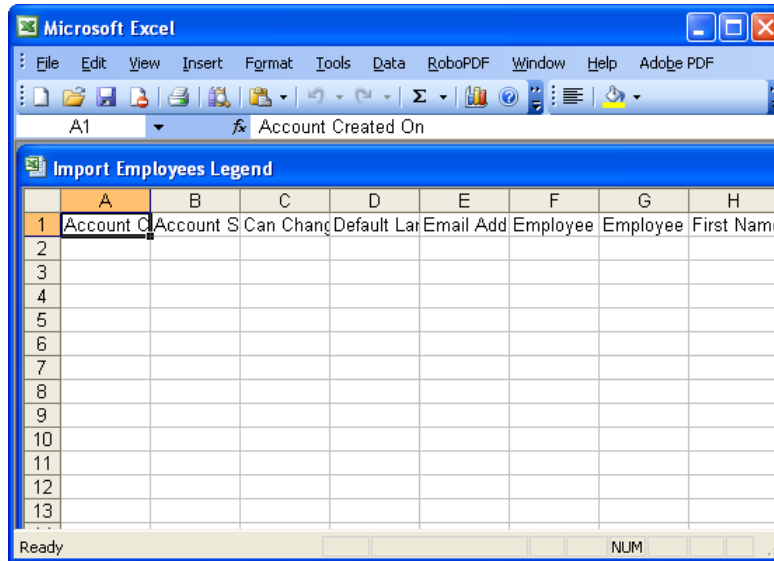
TRACCESS CI Custom Login Image

TTG Systems

Import Employees and Learning Records

Many companies may look at the entry of Employee Profiles and legacy learning records as a daunting task – having to enter each, one-by-one. TRACCESS CI (8.1) allows for the import of these two items using a structured text file (either using tab-separated or comma-separated formats).

The two imports can be accomplished using provided .csv files as templates, and structuring your files accordingly. Once the files are populated, the import of information is as easy as linking the file, and clicking OK.

	A	B	C	D	E	F	G	H
1	Account C	Account S	Can Chang	Default Lat	Email Add	Employee	Employee	First Name
2								
3								
4								
5								
6								
7								
8								
9								
10								
11								
12								
13								

Import Employees .CSV Template

Export Summarized Learning Records (for Import into ERP software)

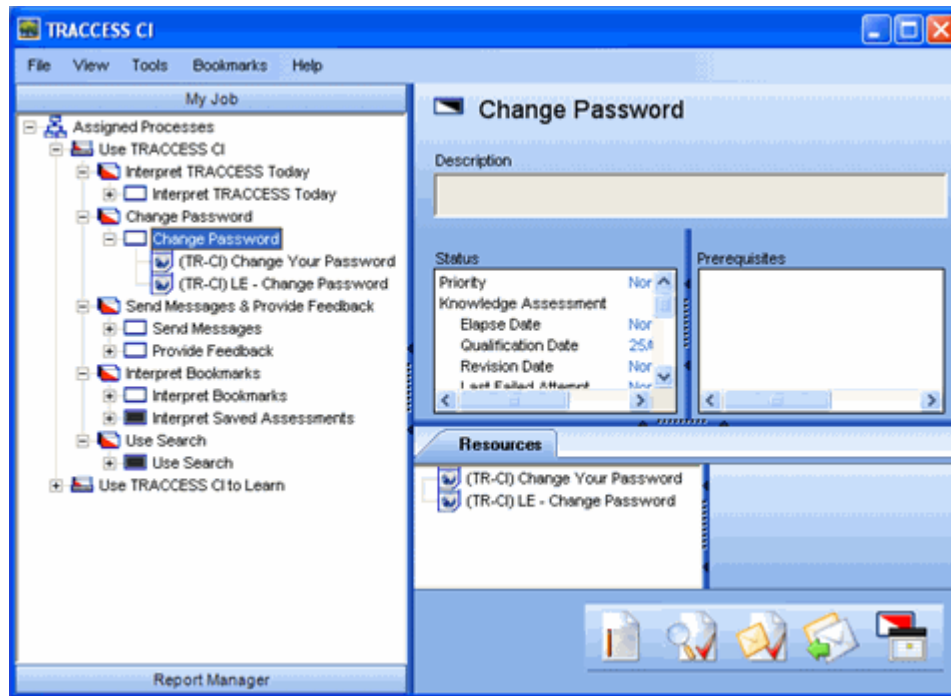
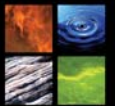
If your company is currently using an Enterprise Resource Planning software, you may wish to "roll-up" the qualification statuses of your Employees into larger pieces, and import this information into your ERP. Although TRACCESS is trackable at the Task level, an ERP may only be set up to track qualifications at the Process (or equivalent) level. For example, in TRACCESS you may have a Task named Comply with Standard First Aid or Comply with Advanced First Aid. An ERP would likely be Comply with OHS.

For the two programs to "talk to each other", TRACCESS CI (8.1) allows you to group the Tasks that would be contained within an ERP grouping, and call them Export Categories. The Export Categories would then be reported on for specified employees, and return a value of either complete or incomplete. To obtain a complete on an Export Category, each Task within the Category must also be complete.

The result of an Export Report is a flat text file that can be used to import information into your ERP.

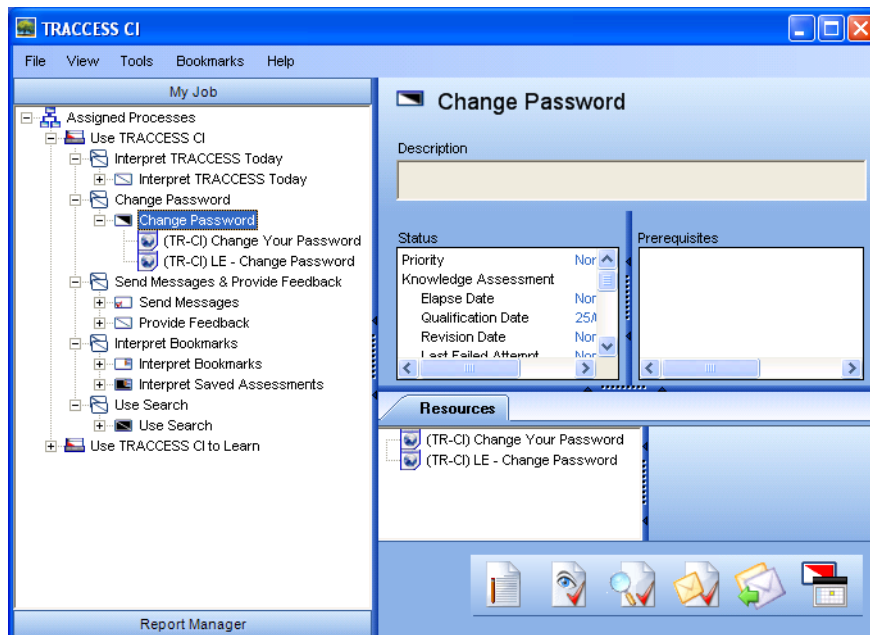
Tree Icons in My Job Match the Context View

In the first release of CI, we had decided that the status displayed in the tree when a Learner is in My Job should be a "roll-up" status – due to the small size of the icon (16x16 pixels). The roll-up status could be incomplete (white), complete (black) or revised (red). This appeared as follows:

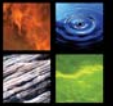




My Job – TRACCESS CI (8.0)




Due to the confusion that this caused to our clients, the tree icons have been changed to reflect the same status on the left pane (tree view) as on the right (context view).



My Job – TRACCESS CI (8.1)



You may also notice that the Sub Process icon has changed from  to . In TRACCESS CI, the color red signifies something that requires attention. For example:

-  A revised Task
-  A completed Task that is about to elapse
-  A High priority Task

The previous Sub Process icon may have been too alarming, and was therefore changed.